

# CivaStar™ ROMLink™ “Plug-N-Load” Sensor



Optic overfill sensors detect the presence of liquid at a preset level. The Civacon CivaStar™ Sensor combines all the enhanced design features and more with the “Plug-N-Load” convenience of our ROMLink System.



### Assured Reliability.

CivaStar’s advanced design, construction and unique LED visual-verification feature optimizes probe reliability and permissive readings at the loading rack so your trucks get loaded on time and your customers get their deliveries on schedule.



### Lighting The Way.

Save time and money tracking down the source of non-permissive readings. CivaStar features a unique LED light in the tip of the probe to provide immediate visual verification and diagnostics of non-permissive probe readings.

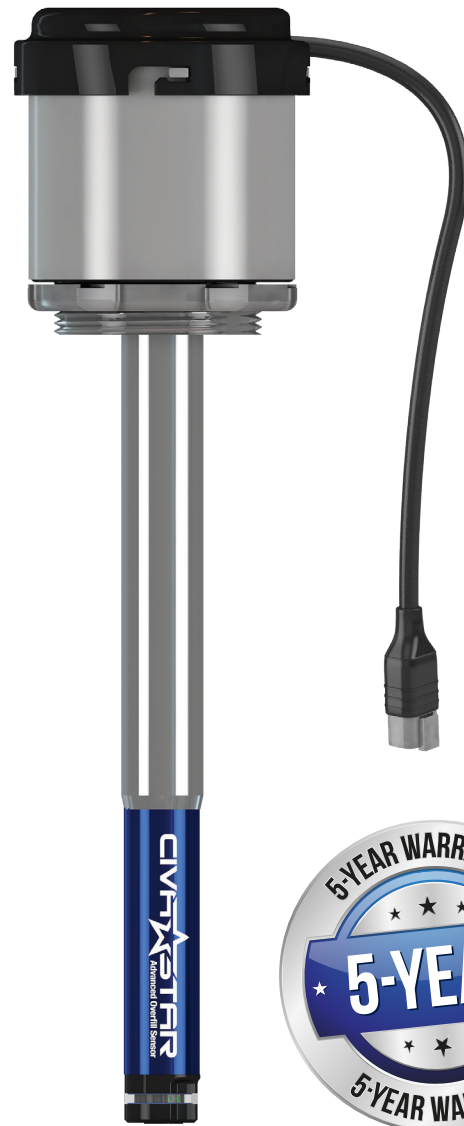


### You’re Set Forever.

Set it and forget it. The specially engineered replaceable optic sensor head provides for reliable liquid detection and trouble-free installation or replacement without the need to ever reset probe heights.

## Specifications

- Cap O-ring Seal - Silicone
- Locking Nut - Plated Steel
- Viscosity - Less than 1000 SSU Prism
- Weight 0.521 kg (1.15 lbs.)
- Operating Temperature -40°C (-40°F) to 70°C (158°F)
- Special length sensors are available upon request

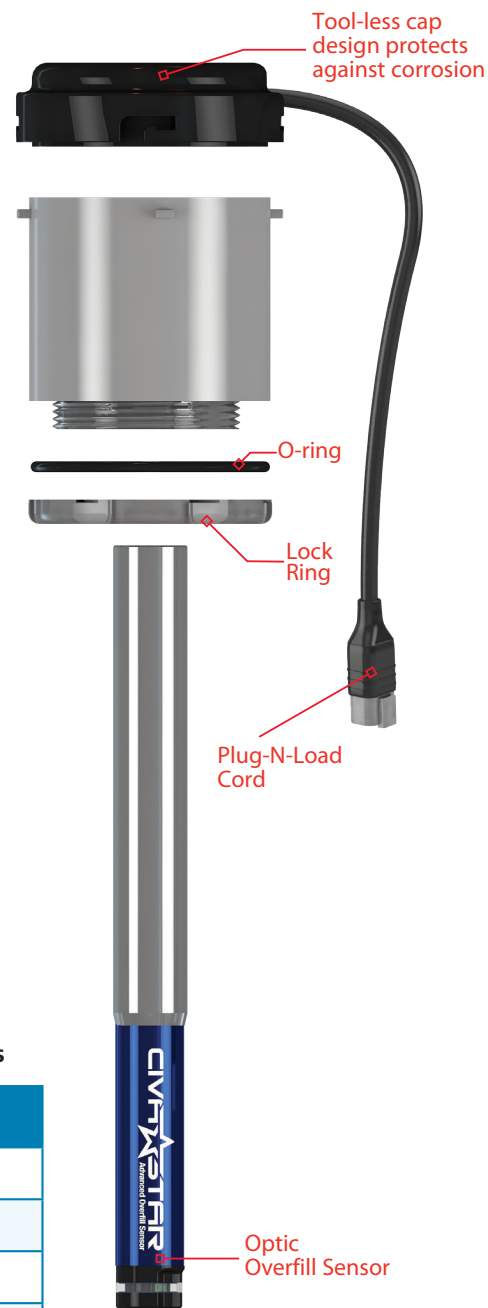


# CivaStar™ ROMLink™ “Plug-N-Load” Sensor



CivaStar goes beyond overfill prevention. Real-time diagnostics keep your trucks on the road and delivering loads, something the competition can't deliver.

Feature	Benefit	CivaStar	Other
Detects the presence of a liquid	Provides overfill protection	Yes	Yes
5-year warranty	Peace of mind	Yes	Yes
LED diagnostics	Eliminates time-consuming and expensive guesswork	Yes	No
Tool-less cap	Quick removal and protects against corrosion	Yes	No
Tool-less spring adjustment	Set length once with torsion spring	Yes	No
Sensor replacement	Rapidly swap sensor without removing tube	Yes	No



## Ordering Specifications & Cross-Reference

**Upgrading to CivaStar ROMLink requires the purchase of the new CivaStar ROMLink Probe and Cap**

*Note: The CivaStar ROMLink Probe is not a direct replacement when upgrading the ROMLink Probe or Cap.*

**CivaStar ROMLink Probe and Cap Replacement Part Numbers**

CivaStar ROMLink Cap w/ Probe Part#
5356-2W-7
5356-2W-12
5356-2W-14
5356-2W-18

**CivaStar ROMLink Probe with Housing Part Numbers**

Old Style ROMLink Sensor Part#	CivaStar ROMLink Sensor Part#
1554-007B	5610RL-7
1554-0012B	5610RL-12
1554-0014B	5610RL-14
1554-0018B	5610RL-18

**CivaStar ROMLink Replacement Probe Part Numbers**

CivaStar ROMLink Sensor Part#
5650RL-7
5650RL-12
5650RL-14
5650RL-18